

BOLD





LAUNCHED IN 2019
BY SILVER YACHTS



LENGTH **85.3m**
BEAM **11m**
DRAFT **2.8m**

BOLD

EXTERIOR DESIGN
IN COLLABORATION
WITH ESPEN ØINO



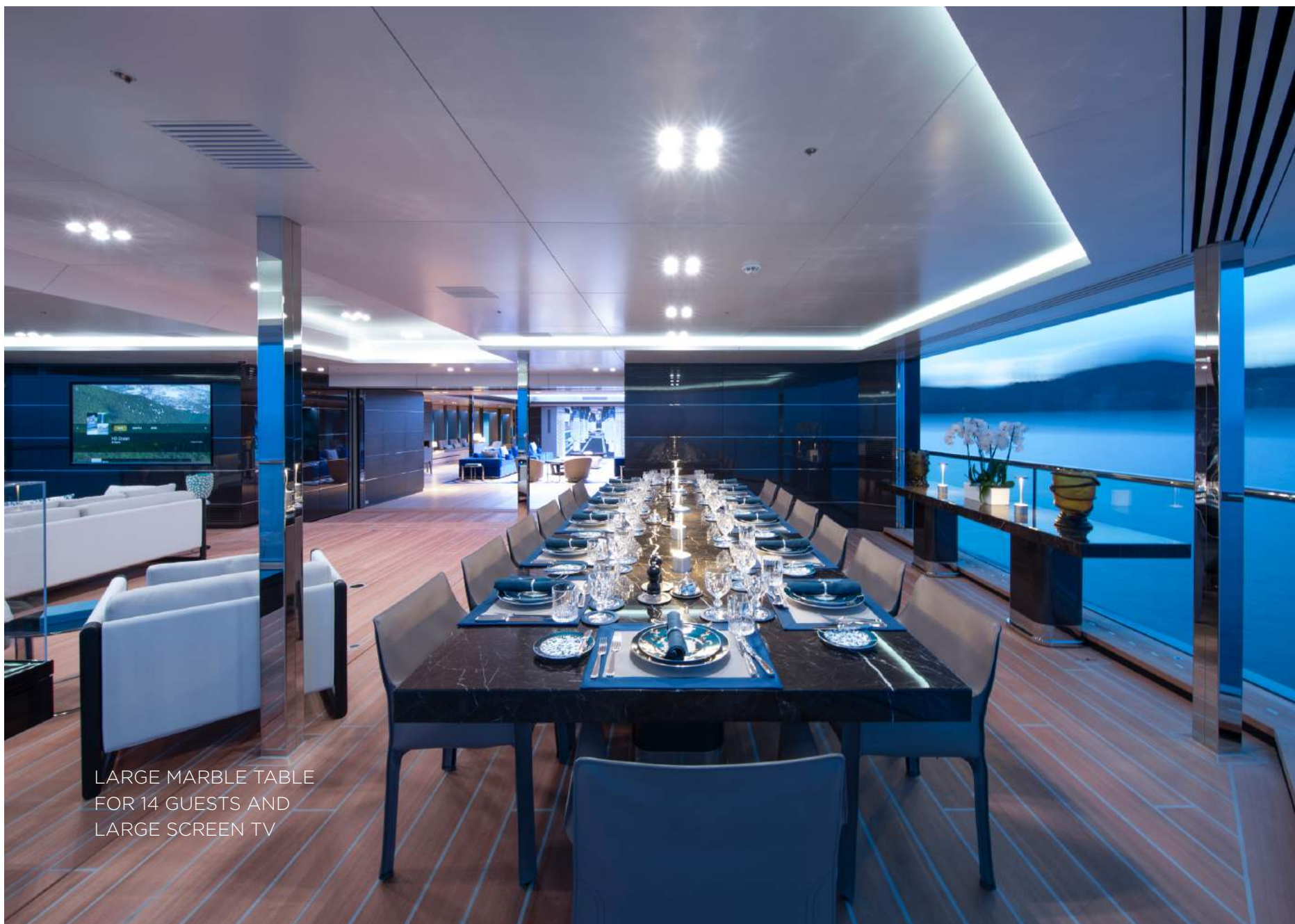
BOLD

4 - 32

SILVER YACHTS

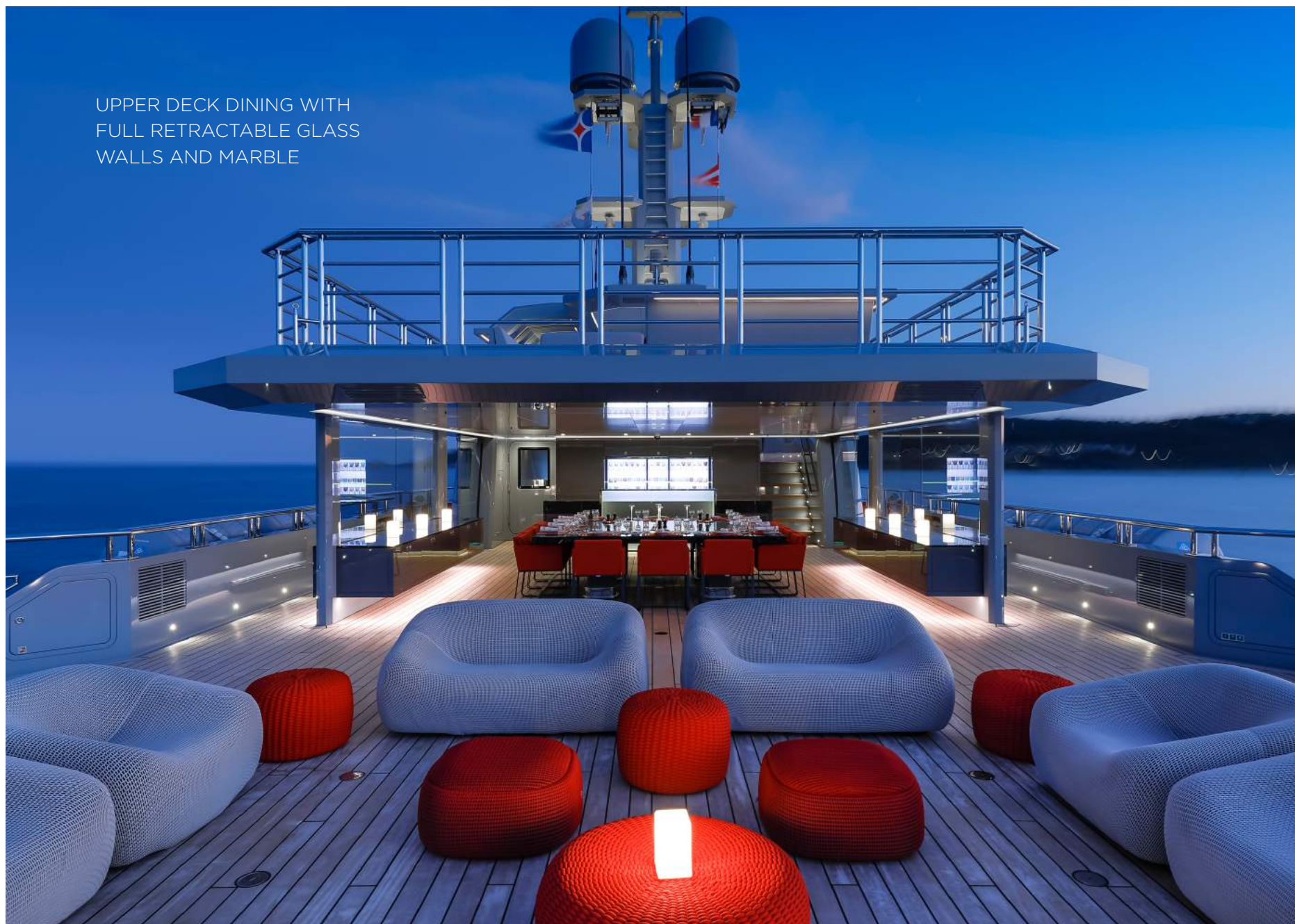


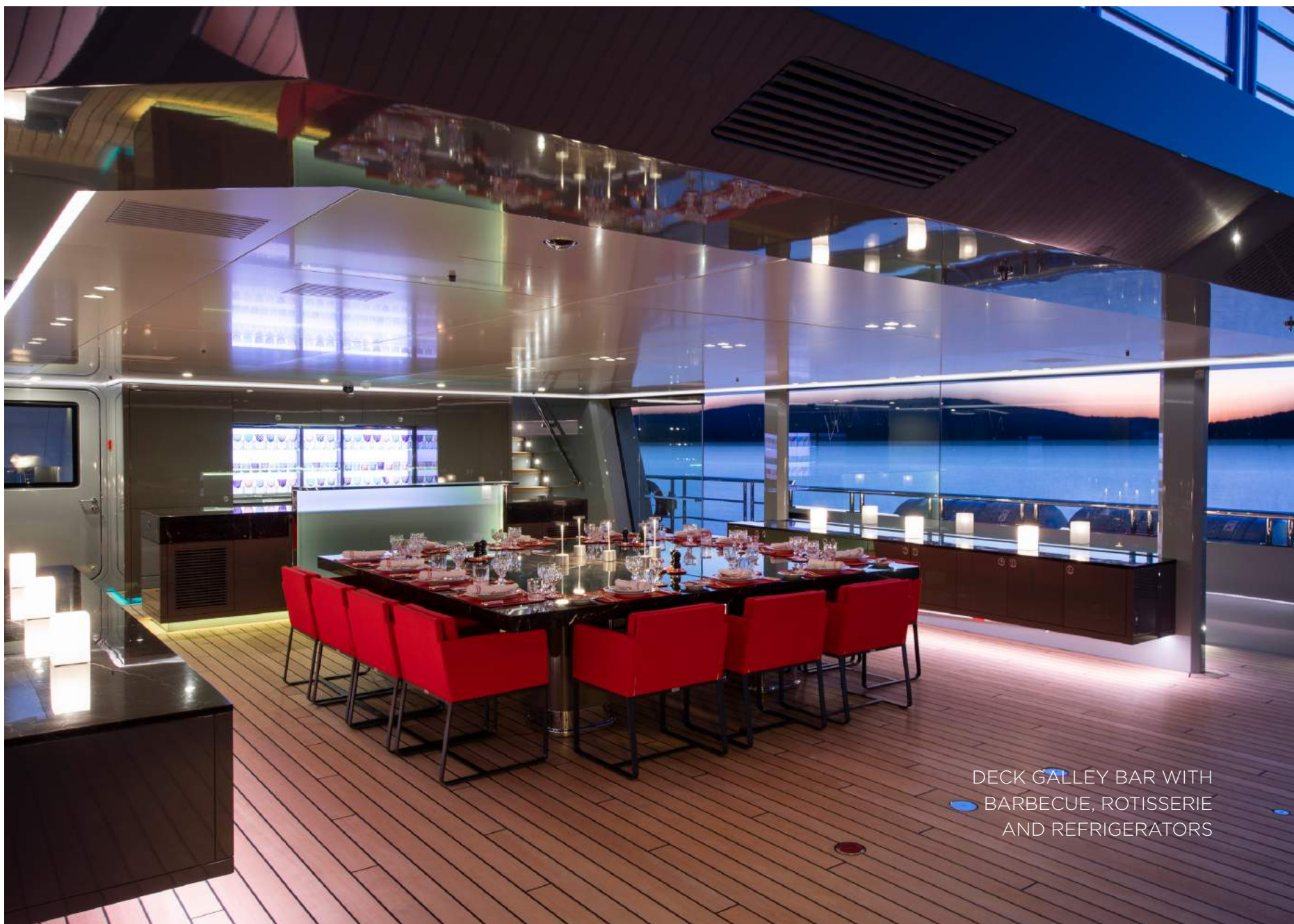
WINTERGARDEN WITH
RETRACTABLE GLASS
AND POWERFUL A/C



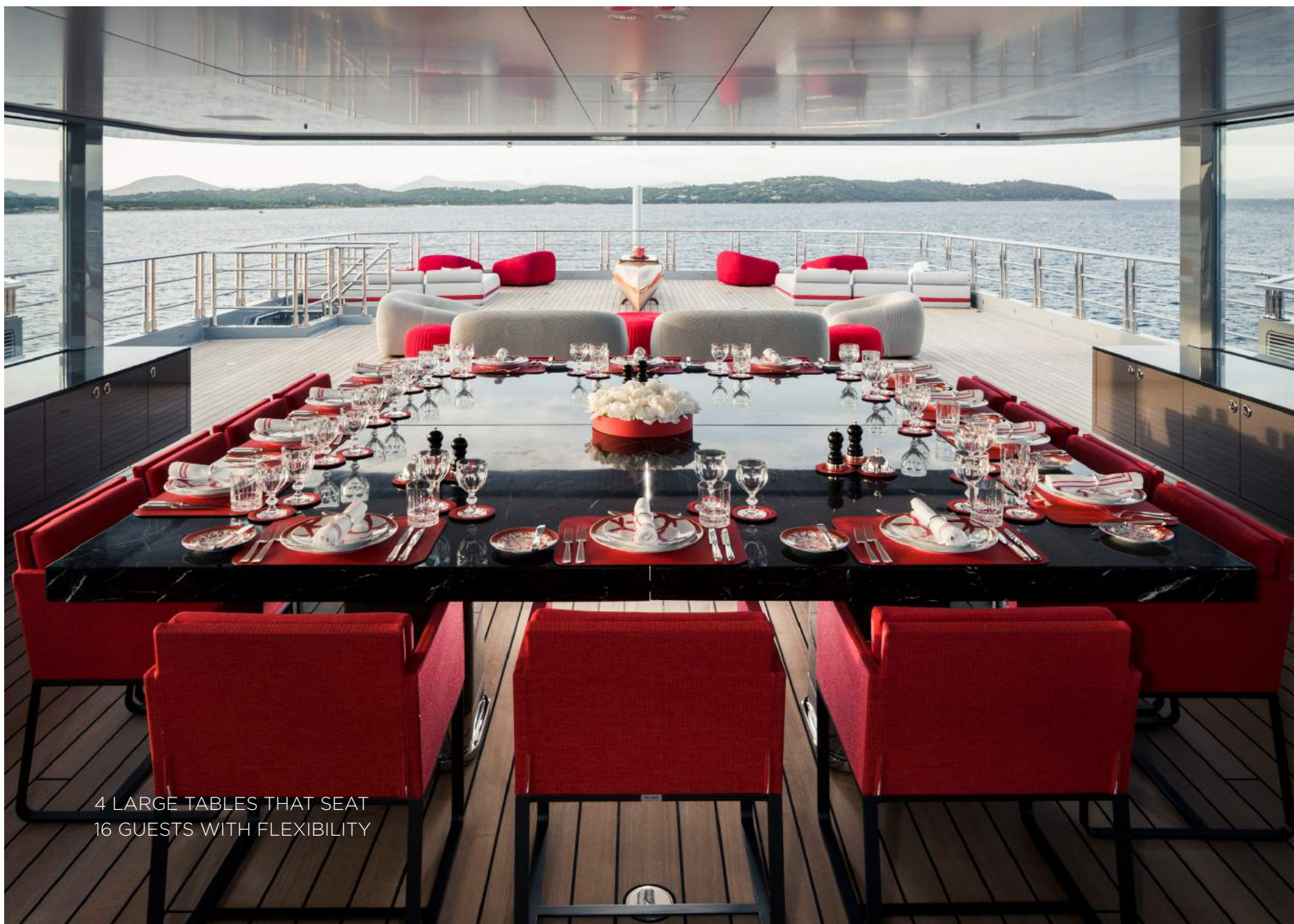
LARGE MARBLE TABLE
FOR 14 GUESTS AND
LARGE SCREEN TV

UPPER DECK DINING WITH
FULL RETRACTABLE GLASS
WALLS AND MARBLE





DECK GALLEY BAR WITH
BARBECUE, ROTISSERIE
AND REFRIGERATORS



4 LARGE TABLES THAT SEAT
16 GUESTS WITH FLEXIBILITY



SUN DECK SURROUND SYSTEM
WITH INTEGRATED LASER SHOW



LOW LEVEL TABLE WITH
INTEGRATED ICE BUCKET AND BURNER



OUTDOOR CINEMA PROJECTOR
AND INTEGRATED LARGE SCREEN

8-GUEST JACUZZI ON THE
SUNDECK WITH GLASS FOR
PRIVACY AND WIND PROTECTION



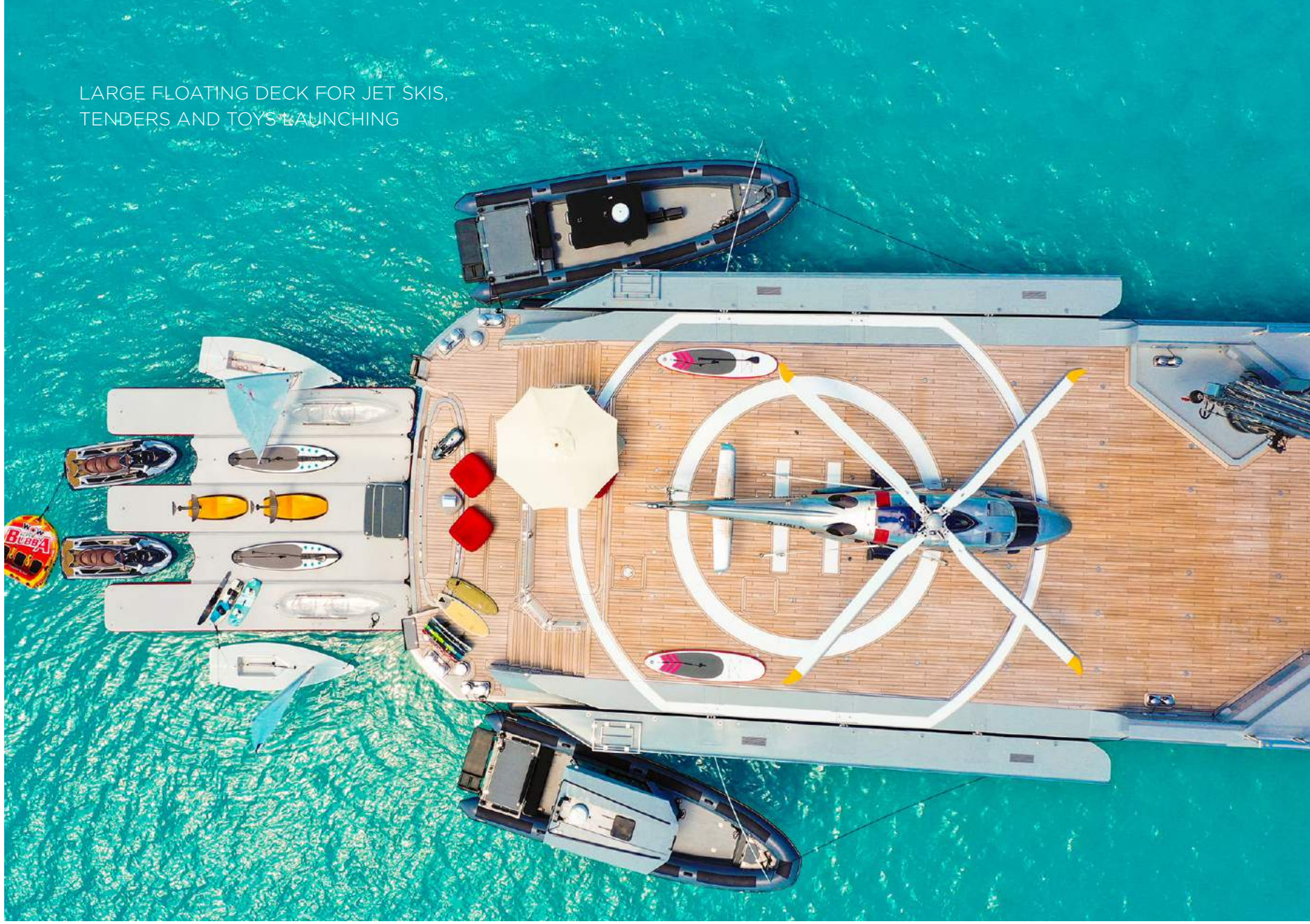
CERTIFIED HELI-PAD
WITH FLUSH LIGHTING
AND REFUELLING TANK



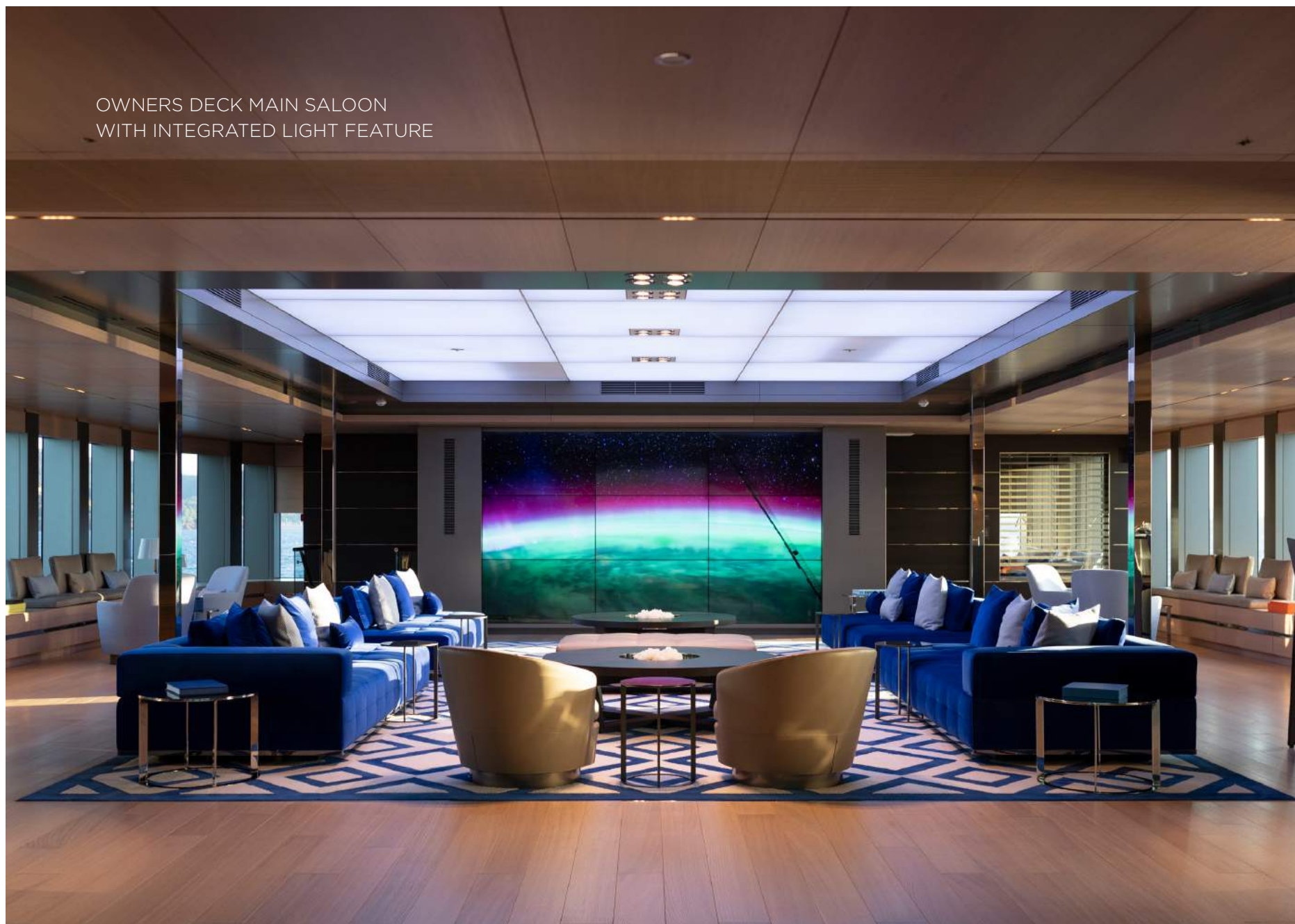


SUITABLE FOR AN
AGUSTA WESTLAND 109
HELICOPTER OR SIMILAR

LARGE FLOATING DECK FOR JET SKIS,
TENDERS AND TOYS LAUNCHING



OWNERS DECK MAIN SALOON
WITH INTEGRATED LIGHT FEATURE





LARGE 300m² LOFT
AND MEDIA WALL



HANDMADE SILK CARPETS BY TAIPING



MASTER STATEROOM WITH HIS
AND HERS ENSUITE WITH HAMMAM



PRIVATE SALON AND DIRECT
ACCESS TO EXTERIOR DECKS



AV SYSTEM IN ALL PUBLIC
SPACES AND STATEROOMS



MASTER STATEROOM WITH
INTEGRATED COFFEE MACHINE



LARGE WINDOWS IN BATHROOM
FOR NATURAL LIGHT



THREE VIP STATEROOMS
WITH ENSUITE



FOUR DOUBLE GUEST
STATEROOMS WITH ENSUITE

RATES

€985,000 High / Low Season

AVAILABILITY

October 2020: Turkey, Red Sea

November - January 2021: Open to options (Maldives, SE Asia)

February 2021: Australia, Shark Bay, Ningaloo Reef, Kimberley, Great Barrier Reef, Whitsundays, Sunshine Coast, Gold Coast

March - May 2021: Americas Cup Auckland, New Zealand

June - October 2021: South Pacific, Papua New Guinea

December 2021 - January 2022: Chile, Argentina, Antarctica

February - April 2022: Caribbean, Mexico, Bahamas

June - July 2022: Scandinavia

August 2022: Mediterranean

M/Y BOLD

BOLD is the fifth, largest and most recent superyacht under construction by Australia's premier luxury yacht builder SILVERYACHTS. She harnesses the world leading fuel efficiency, and technical supremacy, defined by her predecessors. Working in collaboration with renowned yacht designer, Espen Øino, Silver Yachts showcases the unique flexibility of their efficient platforms.

BOLD reveals aggressive styling, expansive interior and exterior spaces and encapsulates the unique synergies of Silver Yachts' latest evolution of high performance and low weight hulls. Her low draft provides a remarkably low fuel consumption, fast repositioning and access to shallow cruising grounds unparalleled in yachts of her size.

Silver Yachts' interior design team have created a sophisticated and luxurious interior with the practicalities and functionality in mind to match the vessel's intended use. The contemporary interiors include teak and oak paneling, metallic painted features combined with oak and marble floors. The interior is defined by the expansive upper deck loft with floor to ceiling windows and open plan arrangement. This leads onto the large wintergarden with wraparound sliding glass panels and air conditioning, allowing indoor and outdoor dinner parties for the guests.

BOLD offers eight guest cabins comprising the Owner's suite, three VIP guest cabins, and four double guest cabins. The Owner's suite includes a master cabin, his and hers ensuite and a private salon with direct access to exterior decks. The entertaining deck, immediately above the upper deck loft, continues the theme of expansive open space. Glass backed serveries, and sliding glass doors protect the 16 seat marble dining table, offering a tranquil setting. Forward of the dining table, a deck bar with barbecue facilities, rotisseries and refrigerated spaces, fulfil guests' culinary desires between main meals. Aft of the dining area is another large open deck space with provision for shade sail coverage. This space allows configuration as an outdoor table setting, lounge, sun beds, and deck chairs and is large enough to accommodate combination of them all.

Aloft the entertaining deck is the more intimate sun deck retreat. The forward split deck offers an eight person Jacuzzi and sun lounges, behind forward raking windbreak glass. The aft split deck offers an eight person

settee behind windbreak glass, protected by the overhead mast deck. Aft of the settee is another open deck with relaxed outdoor seating and a feature centrepiece.

The vast aft main deck with folding hand rails and hydraulic folding bulwarks encompasses an approved helideck with D value of 13, suitable for helicopters such as an AW109. Also included is re-fuelling tank, 3000 litres capacity recessed into the deck. The 8 ton aft deck crane with 15m reach, allows the launch and retrieval of the vast array of tenders and toys that can be accommodated on this deck. Forward of the helideck, is a protected helicopter storage area that may be utilized for a crossing. This space may also be reconfigured as a discotheque, with the aft deck transforming into a party deck, with optional shelter from a large shade supported by the crane. The large foredeck and 3 ton SOLAS crane also allows launch and retrieval of a 6m tender and smaller tender or rescue craft. This foredeck crane also services the storage space below rated for jet ski storage, or offering additional provisions storage for extended adventures.



SPECIAL CHARTER FEATURES

- **8 person sun deck jacuzzi** with hard cover and large sun pads surrounded with glass for wind protection and more privacy
- Fastest world explorer worldwide, with **maximum speed of 23 knots**, for fast positioning, **low draft (2.8m)** for access to shallow cruising grounds of her size.
- Large outdoor entertaining areas on various decks with **bar and teppanyaki/barbecue** with generous seating and large scale 40,000+W sound system with integrated disco lighting
- **Expansive Loft Saloon** with floor to ceiling windows and open plan arrangement leading to the Wintergarden, of a combined area of 300m², with 6m x 3m media screen and up to 3.70m ceiling height
- **Air conditioned Wintergarden** with a **table for 18 guests**, of which glass panel system can be fully opened for al fresco dining
- Outstanding Lifestyle Feature award at the 2020 Boat International Design Awards for the Loft/Winter Garden theme



- **Large outdoor cinema on sundeck** and integrated TV 6m x 3m media wall in LOFT and 5m x 2m LED screen in the combined **Helihanger/ Gym and Yoga room**
- Owner's suite with master cabin, **his and hers ensuite with hammam and private salon** with direct access to exterior decks
- Multipurpose **400m² teak main deck** with folding bulwarks to carry any kind of tenders and toys, with a 6t crane. **Helihanger is gym and disco with integrated media and light system (VIP-Room)** Certified heli landing deck with 3.5t 12m D-value with flush lighting
- **Two 10.5m twin engine large high seas excursion Rupert tenders** (one open and one cabin) and **one 6m Rupert T6 tender**
- Complete set of toys including two 300hp Seadoo Waverunners and **two laser sailing dinghies** for fleet races, 9m x 7m floating dock for water toys and kitesurfing
- **Twin-engine fast Helicopter** in addition available for charter: Leonardo AQ 109 Grand

SPECIFICATIONS

DIMENSIONS

Length:	85.3m (279' 85")
Beam:	11.00m (36'09")
Draft:	2.8m (9'19")

GENERAL

Year:	2019
Builder & Naval Architect:	Espen Øino / SilverYachts
Exterior Designer:	Espen Øino
Interior Designer:	SilverYachts
Hull Configuration:	Semi Displacement
Hull Construction:	Aluminium

ACCOMMODATION

Number of Cabins:	8
Total Guests:	16
Total Crew:	20
Additional 4 berths for charterers' staff	

CERTIFICATIONS

Commercial/MCA:	PYC with valid Lloyds of London
Flag:	Marshall Islands
Port of Registry:	Bikini

TECHNICAL INFORMATION

Gross tonnage:	1551 tons
Range:	5,000nm @ 16 knots / 7,000nm @ 14 knots Max
speed:	23 knots
Cruising speed:	16 knots
Engines:	2 x MTU 16V 4000 M73
Generators:	2 x Zenoro, Scania (345kWe) 1 x Zenoro, Scania (245kWe)
Stabilizers at anchor and underway	

TENDERS AND TOYS

- 1 x 10.5m centre console Rupert rib style tender - 440Hp
- 1 x 10.5m custom Rupert style tender with EO designed wheelhouse 440Hp
- 1 x R6 Rupert rib style tender - 220Hp
- 2 x 300Hp GTX LTD Seadoo Waverunners
- Seabobs
- Floating Island
- Kite start base
- Full snorkeling & diving equipment
- 2 x Laser sailing dinghies

MAIN GYM AREA

- Dedicated Gym area 60m³ - enclosed
- Stream workout vids or mirror from iphone to 4m TV

Machines

- Techno Gym Treadmill
- Techno Gym Elliptical
- Techno Gym Rower
- Techno Gym Bike

Gym stock

- Free Weights / Kettle Weights
- Yoga Matts
- TRX
- Medicine balls
- Rollers
- Steps

Options

- All Gym equipment can be moved to several areas onboard
- Huge dedicated Gym/Disco area with 4m TV for workout vids or stream from phone. Big Sound system
- Upper outdoor private deck with 360-degree views

SUN DECK

- 1 AFT LOUNGE AND DINING
- 2 JACUZZI
- 3 FORWARD LOUNGE

UPPER DECK

- 4 EXTERNAL DINING
- 5 EXTERNAL BAR

OWNERS DECK

- 6 WINTERGARDEN
- 7 MAIN SALON/LOFT
- 8 PANTRY
- 9 OWNERS CABIN
- 10 OWNERS LOUNGE
- 11 HIS ENSUITE
- 12 HER ENSUITE
- 13 FOREDECK LOUNGE

MAIN DECK

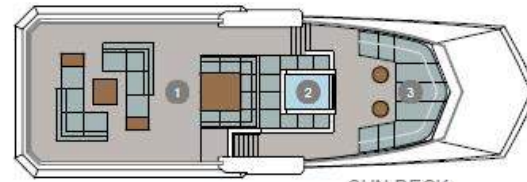
- 14 AFT BATHING/MARINA
- 15 HELIDECK AND GARAGE

- 16 GUEST CABIN 1
- 17 GUEST CABIN 2
- 18 GUEST CABIN 3
- 19 GUEST CABIN 4

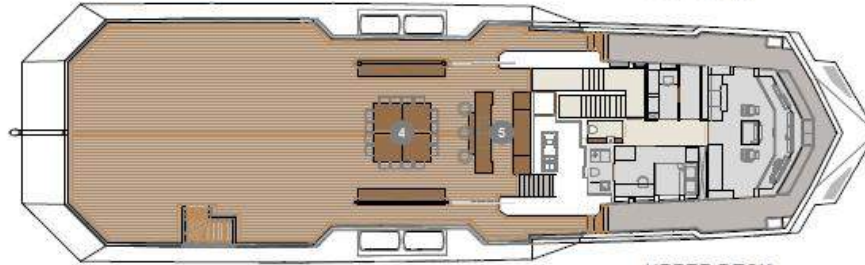
- 20 VIP CABIN 3
- 21 VIP CABIN 1
- 22 VIP CABIN 2

LOWER DECK

- 23 LAZARETTE



SUN DECK



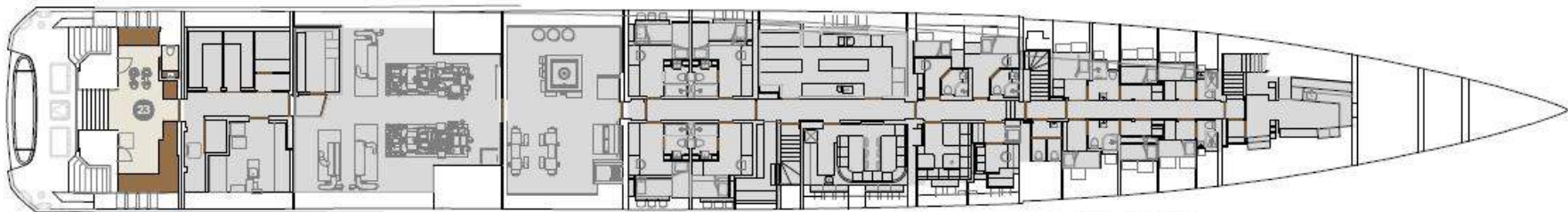
UPPER DECK



OWNERS DECK



MAIN DECK



LOWER DECK

DISCOVER THE PLANET'S MOST EXCITING
GROUNDS IN ULTIMATE LUXURY

